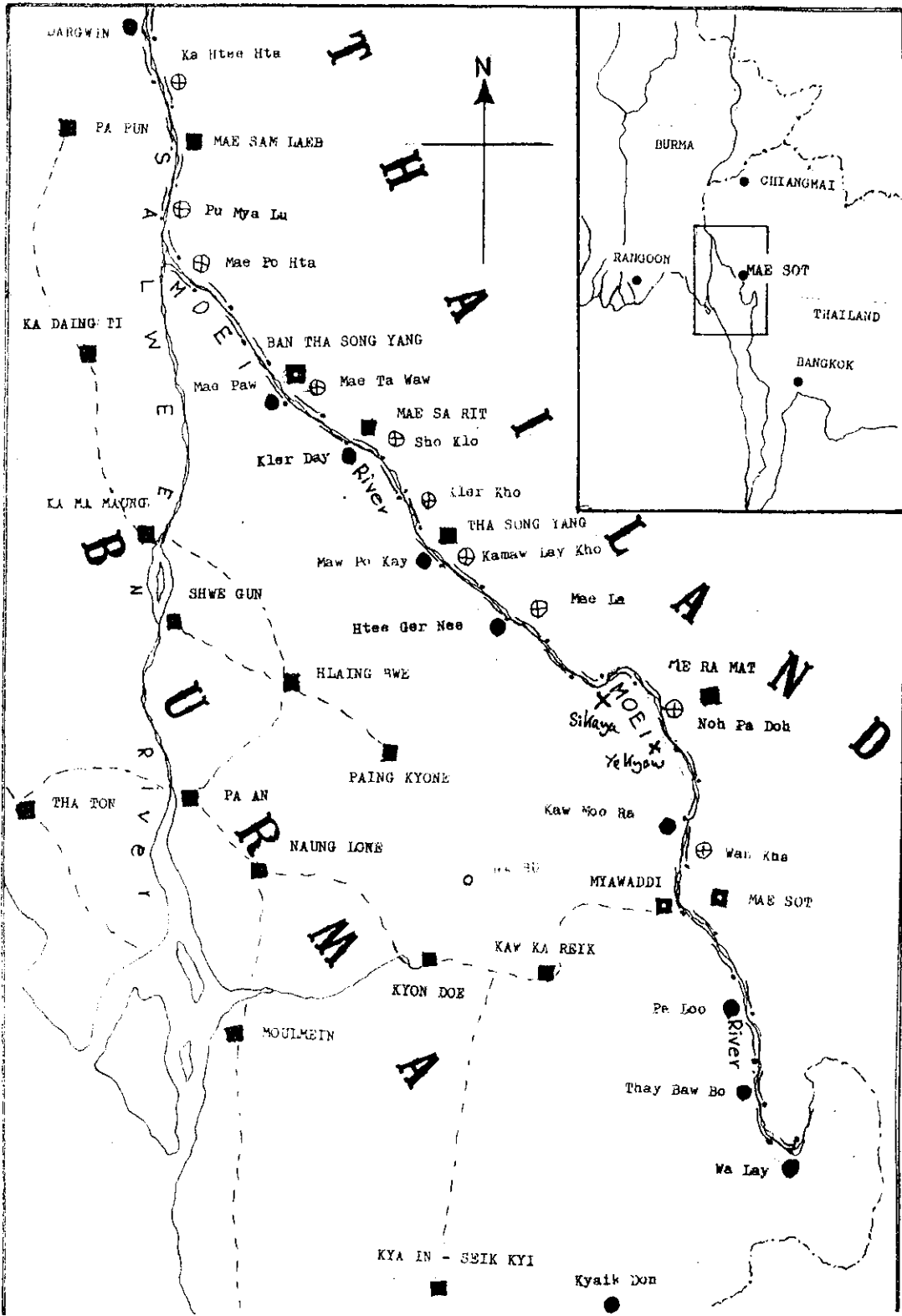


KAREN REFUGEE COMMITTEE
MONTHLY REPORT

JANUARY 1989



KAREN REFUGEE COMMITTEE

MONTHLY REPORT

JANUARY 1989

The Karen Refugee Committee expresses, on behalf of the entire Karen refugee population, its sincere gratitude to the Thai authorities concerned and to the people of the Kingdom of Thailand for their kindness in granting temporary asylum to the Karen refugees who are in trouble and need. This gesture of goodwill will always be remembered and cherished by the Karen refugees and the Karen people.

The committee also expresses its sincere gratitude to every individual, and agency who kindly and lovingly have done so much for the Karen refugees during the years. Without these help and support, the refugees will in no way be able to survive.

The month of January recorded an increase again in the Karen refugee population. The heavy fighting between Karen and Burmese troops during the third week of this month at Kler Day camp which is right across from Ban Mae Sa Rit had caused Karen civilians there and its surroundings to move across the border to escape the fighting. 486 villagers comprising of men, women and children moved into Sho Klo camp and another 47 villagers moved into Kamaw lay Kho camp. The fighting at Kler Day was over now but there are signs of more military activities which most likely mean more fighting in the days to come. In light of this, these people will still be in the camps for sometime at least. There are sign of military activities in other battle fronts as well. This summer could be very stormy and turbulent.

The health situation in the camps is quite satisfactory but the medical personnels are busy coping with malaria and other common tropical disease encountered in the camps.

NUMBER OF KAREN REFUGEES IN THE CAMPS

Camp	No. of		Over 12		5 to 12		Under 5		TOTAL
	Families	M	F	M	F	M	F		
WANG KA	532	562	931	308	335	182	161	2479	
NOH PA DOH	245	395	411	148	145	95	83	1277	
MAE LA	731	592	1032	381	332	233	218	2788	
KAMAW LAY KHO	452	592	798	211	211	152	170	2134	
KLER KHO	296	501	533	227	244	78	53	1636	
SHO KLO	1183	1854	2355	665	635	360	396	6265	
MAE TA WAW	445	595	863	388	409	150	155	2560	
	3884	5091	6923	2328	2311	1250	1236	19139	
MAE PO HTA	90	146	168	58	70	24	34	500	
KA HTEE HTA	112							521	

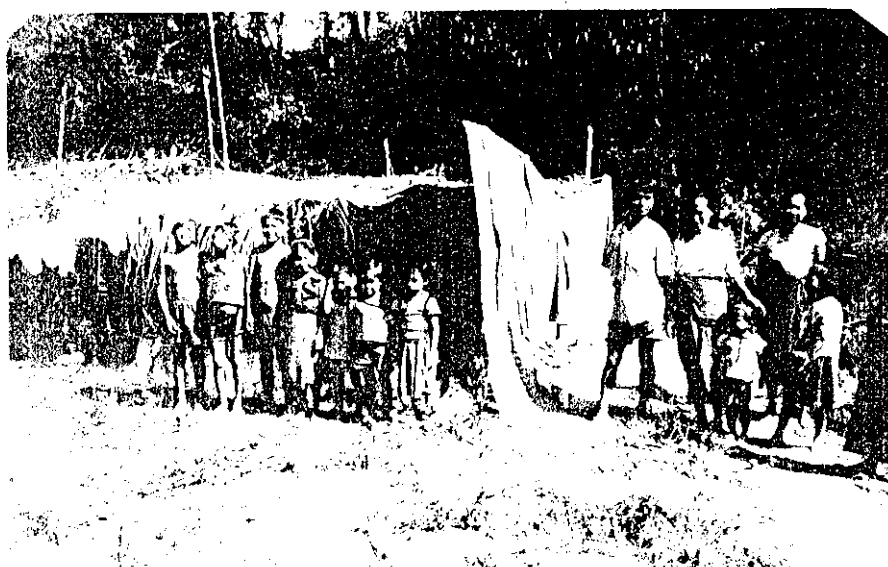
Many houses were burned down in Kler Day and Mae Sa Rit.



rice distribution at Sho Klo refugee camp.



New arrivals at Sho Kio refugee camp.



Living under temporary make shift shelter.



RICE RECEIVED DURING THE MONTH

From: - CONSORTIUM OF CHRISTIAN AGENCIES	2100
- C O E R R	225
- I C A	220
- WORLD FREEDOM FOUNDATION	70
- WORLD RELIEF	70
- BISHOP GAUGHAN	25

NEED OF RICE AND RICE SUPPLIED

<u>Camp</u>	<u>Needed</u>	<u>Supplied</u>
WANG KA	385	260
NOH PA DOH	198	175
MAE LA	427	385
KAMAW LAY KHO	329	270
KLER KHO	262	220
SHO KLO	981	915
MAE TA WAW	401	355
	2983	2580
MAE PO HTA	49	50
KA HTEE HTA	78	80
	<u>3110</u>	<u>2710</u>

OTHER ITEMS RECEIVED

From:- CONSORTIUM OF CHRISTIAN AGENCIES...	Fish Paste - 900 tins
	... Salt - 145 bags
- I C A	... Fish Paste - 135 tins

With the increase in the number of Karen refugees in the camps, the need for food increases also. For some time now, as appeared in our monthly reports, the supply of rice for the refugees have been below the needed amount. This new increase in the refugee population will make things harder for them. It is to our great relief that we have individuals and agencies who from time to time have given help to the refugees. These help and support have acquired much to make things easier for the refugees. But the need is still many and great. We reiterate our earnest plea for your continued help and support for these people as long as the need exists.

Our sincere thanks again to everyone for the noble deeds that you have done for us. May God bless all of you.

Yours faithfully,



Robert Htwe
Chairman
Karen Refugee committee