



Food and Agriculture
Organization of the
United Nations

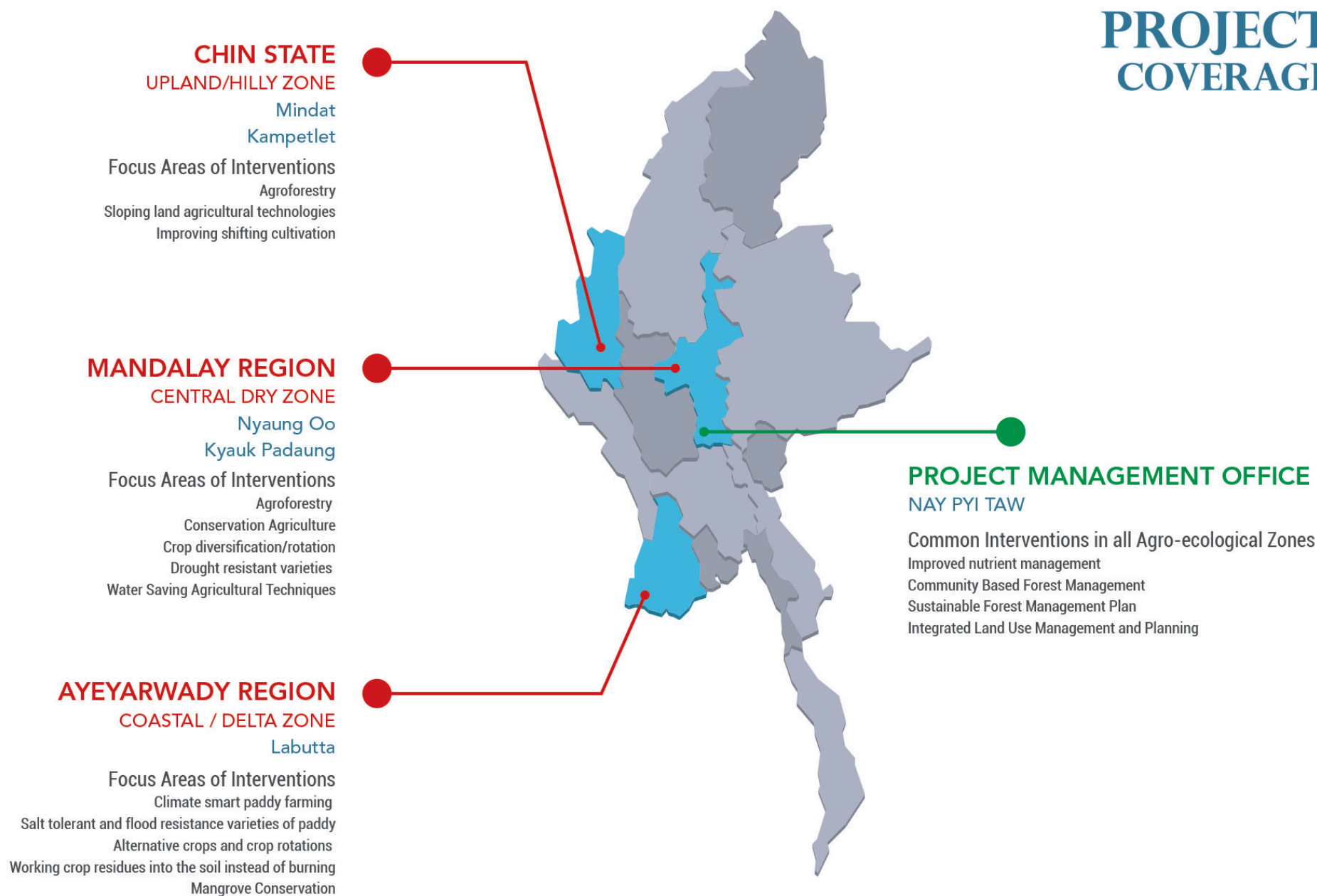
SUSTAINABLE CROPLAND AND FOREST MANAGEMENT IN PRIORITY AGRO - ECOSYSTEMS OF MYANMAR (SLM-GEF PROJECT)



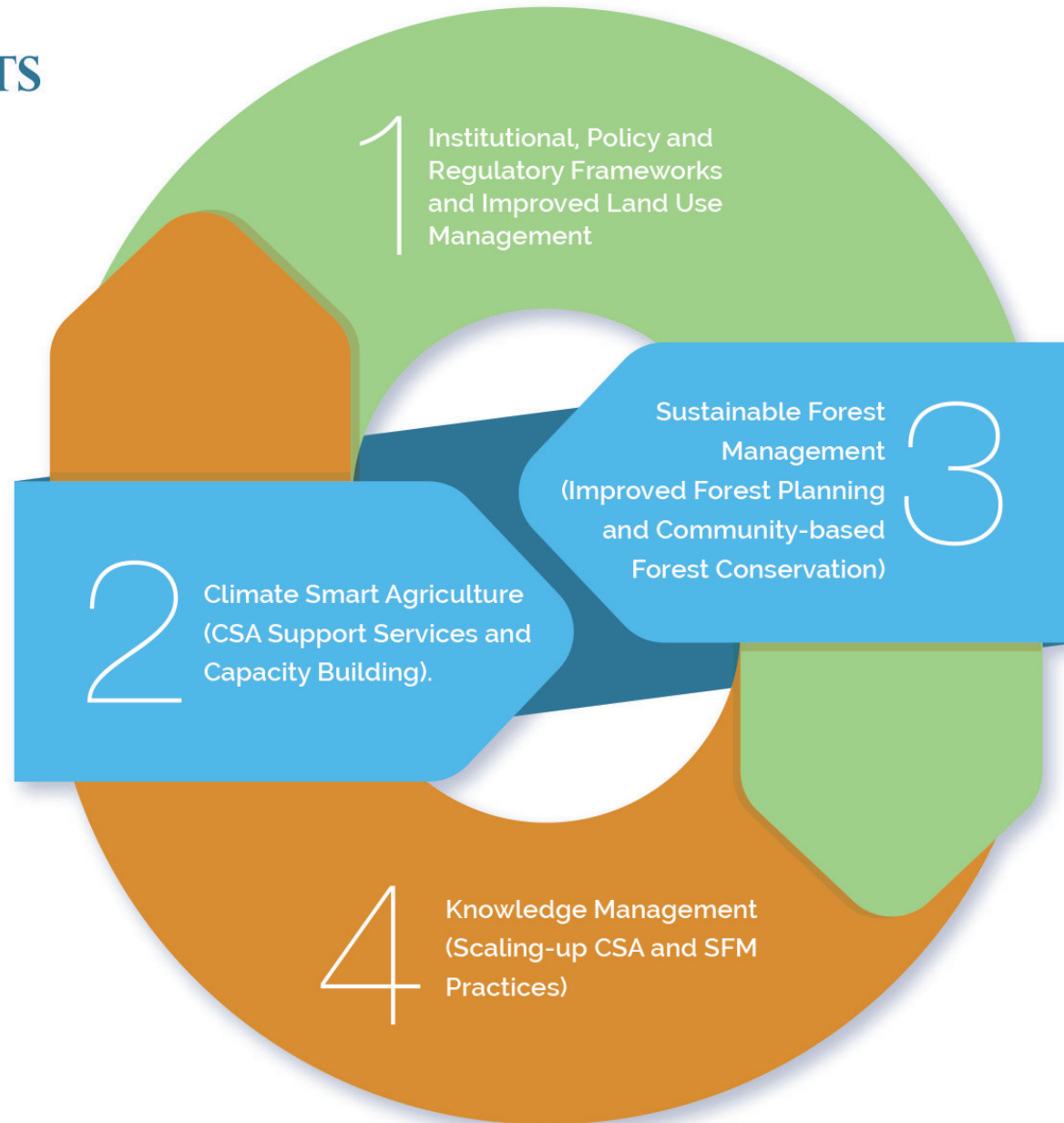
MAIN ACHIEVEMENT

- › Capacity building on “Legal and institutional aspects of Sustainable Land Management (SLM), Sustainable Forest Management (SFM) and Climate Smart Agriculture (CSA)” organised at National level.
- › Land Use and Land Cover Mapping with Participatory Land Use Planning (PLUP) in progress.
- › A National CSA Center established at Yezin Agriculture University (YAU) and a “National Workshop on Promoting CSA in Myanmar,” organised by the Center.
- › Farmer Field School (FFS) Curricula and Handbooks for three agro-ecological zones developed.
- › Trainings of Trainers on CSA and knowledge management organised and 71 FFSs established in five pilot Townships in three agro-ecological zones on CSA techniques and practices.
- › The curriculum for academic courses at YAU and State Agricultural Institutes (SAIs) and for in-service training for MoALI staffs developed/revised integrating CSA.
- › A Training of Trainer on CSA organized for representatives from YAU, SAI and relevant government departments from Nay Pyi Taw and 14 States/Regions.
- › A training on “Fundamentals of Community Forestry” organized for Deputy Range Officers in Nyaung-U.
- › Ecosystem-based SFM Planning Manual and Implementation Manual developed.
- › Establishment of 20 Community Forestry sites in five pilot Townships is in progress.
- › A training on Script writing for the representatives from Farmer Channel and relevant government departments organized.

PROJECT COVERAGE



MAIN COMPONENTS



KEY ACTIVITIES OF THE PROJECT

- 1 Conduct assessment on legal and institutional frameworks and finalize the policy improvement strategy for sustainable land management (SLM), sustainable forest management (SFM) and climate smart agriculture (CSA).
- 2 Support for capacity building and implementation of the legal and institutional frameworks for SLM, SFM and CSA.
- 3 Develop land use and land cover (LULC) maps and associated mapping products for the five pilot townships and support the design and implementation of township level land use plans (LUP).
- 4 Development of CSA, SFM, SLM and community based forest management (CBFM) curricula and training materials to integrate CSA and SFM components in the related academic courses and training programmes for capacity building at all levels.
- 5 Curriculum development, value chain analysis and training materials development on CSA, SLM and SFM for farmer field schools on CSA and community based forestry initiatives in the pilot townships.
- 6 Establishment and operationalization of a national CSA Centre at Yezin Agricultural University to coordinate overall CSA initiatives.
- 7 Organise trainings for related government officials and communities and establish farmer field schools and community forests in five pilot Townships under three agro-ecological zones to demonstrate and disseminate the CSA, SLM and SFM techniques and practices.
- 8 Review and revise Township level agricultural extension service plans and Districts Forest Management Plans and for the pilot districts/Townships integrating CSA and SFM components.
- 9 Knowledge management and scaling-up of best CSA and SFM practices

CONTACT PERSON

Ms Thu Zar Myint

National Project Coordinator, Director, Land Use Division,
Department of Agriculture
Ministry of Agriculture, Livestock and Irrigation
Tel: 09 5 101 612, Email: zarmyint@gmail.com

Mr Ngwe Thee

National Project Coordinator, Assistant Director,
Forest Department, Ministry of Natural Resources and
Environmental Conservation
Tel: 09 250 107 754, Email: ngwethee@gmail.com

Mr Xavier Bouan

Senior Technical Advisor
SLM-GEF Project, Food and Agriculture Organization of the United Nations
Tel: 09 894 097 710, Email: Xavier.Bouan@fao.org



CONTACT PROJECT OFFICE

📍 SLM-GEF Project, Building No. 39, Forest Department Ministry of
Natural Resources and Environmental Conservation, Nay Pyi Taw, Myanmar

☎ 09 423334625 ✉ slmmyanmarinfo@gmail.com

🌐 www.slmmyanmar.info

FAO REPRESENTATION OFFICE IN MYANMAR

📍 FAOR Building, Seed Division Compound, Myanmar Agriculture Service,
Insein Road, Gyogon, Yangon

☎ 01 641672 ✉ FAO-MM@fao.org

🌐 www.fao.org/myanmar

PROJECT HIGHLIGHTS

PROJECT DURATION

5 years: July 2016 to June 2021

FUNDING

Global Environment Facility (GEF)

PROJECT OBJECTIVE

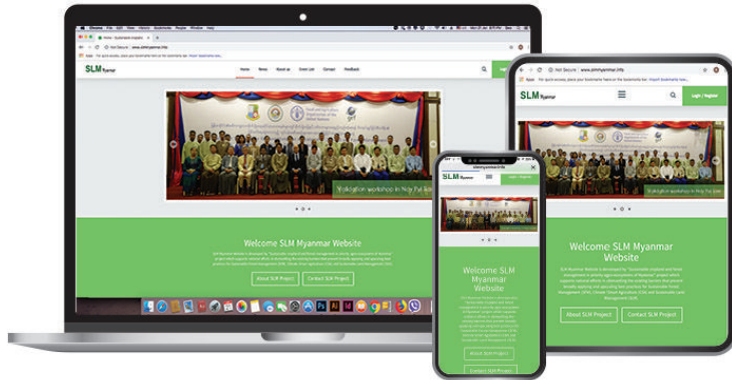
To build the capacity of farming and forestry stakeholders to mitigate climate change and improve land condition by adopting climate-smart agriculture (CSA), sustainable forest management (SFM) and sustainable land management (SLM) policies and practices.

IMPLEMENTING ORGANIZATIONS

FAO in collaboration with Ministry of Natural Resources and Environmental Conservation (MoNREC) and Ministry of Agriculture, Livestock and Irrigation (MoALI)

SLM Myanmar website

www.slmmyanmar.info



Website and Social platform for all CSA, SFM and SLM practices in Myanmar

MAIN FEATURES

- Project news
- Project activity timeline
- CSA practices
- Downloadable CSA documents
- Social platform
- Creating group and share information, links, photos, videos
- Writing CSA, SFM, SLM article
- Dialog features (Forum)
- Mobile friendly

Partners



CFNWG

© FAO, 2019

CA3384EN/1/02.19



Some rights reserved. This work is available under a CC BY-NC-SA 3.0 IGO licence