

MYANMAR

States/Divisions & Townships

Overview Map

MIMU



Myanmar Information Management Unit



The Myanmar Information Management Unit (MIMU) is an Inter-Agency Standing Committee (IASC) common service providing information management services, including GIS mapping and analysis, to the humanitarian and development actors both inside and outside of Myanmar.

Ayeyarwady Division

- 1 Bogale
- 2 Danubyu
- 3 Dedaye
- 4 Einme
- 5 Hinthada
- 6 Ingapu
- 7 Kangyidaunt
- 8 Kyaiklat
- 9 Kyangin
- 10 Kyaunggon
- 11 Kyonpyaw
- 12 Labutta
- 13 Lemyethna
- 14 Maubin
- 15 Mawlamyinegyun
- 16 Myanaung
- 17 Myaungmya
- 18 Ngapudaw
- 19 Nyaungdon
- 20 Pantanaw
- 21 Pathein
- 22 Pyapon
- 23 Thabaung
- 24 Wakema
- 25 Yegy
- 26 Zalun

Bago East Division

- 27 Bago
- 28 Daik-U
- 29 Kawa
- 30 Kyaukkyi
- 31 Kyauktaga
- 32 Nyaunglebin
- 33 Oktwin
- 34 Phyu
- 35 Shwegyin
- 36 Tantabin
- 37 Taungoo
- 38 Thanatpin
- 39 Waw
- 40 Yedashe

Bago West Division

- 41 Gyobingauk
- 42 Letpadan
- 43 Minhla
- 44 Monyo
- 45 Nattalin
- 46 Okpho
- 47 Padaung
- 48 Pauk Kaung
- 49 Paungde
- 50 Pyay
- 51 Shwedaung
- 52 Thayarwady
- 53 Thegon
- 54 Zigon

Chin State

- 55 Falam
- 56 Hakha
- 57 Htantlang
- 58 Kanpetlet
- 59 Madupi
- 60 Mindat
- 61 Paletwa
- 62 Tiddim
- 63 Tonzang

Kachin State

- 64 Bhamo
- 65 Chipwi
- 66 Hpakan
- 67 Injyangyang
- 68 Kawnglanghpu
- 69 Machanbaw
- 70 Mansi
- 71 Mogaung
- 72 Mohnyin
- 73 Momauk
- 74 Myitkyina
- 75 Nogmung
- 76 Patheingyi
- 77 Shwegu
- 78 Sumprabum
- 79 Tanai
- 80 Tsawlaw
- 81 Waingmaw

Kayah State

- 82 Bawlakhe
- 83 Demoso
- 84 Hpasawng
- 85 Hpruso
- 86 Loikaw
- 87 Mese
- 88 Shadaw
- 89 Kyunhla
- 90 Hpa-An
- 91 Hpapun
- 92 Kawkareik
- 93 Kyain Seikgyi
- 94 Myawaddy
- 95 Thandaung

Kayin State

- 89 Hlaingbwe
- 90 Hpa-An
- 91 Hpapun
- 92 Kawkareik
- 93 Kyain Seikgyi
- 94 Myawaddy
- 95 Thandaung

Magway Division

- 96 Aunglan
- 97 Chauk
- 98 Gangaw
- 99 Kamma
- 100 Magway
- 101 Minbu
- 102 Mindon
- 103 Minhla
- 104 Myaing
- 105 Myothit
- 106 Natmauk
- 107 Ngape
- 108 Pakokku
- 109 Pauk
- 110 Pwintbyu
- 111 Salin
- 112 Saw
- 113 Seikphyu
- 114 Sidoktaya
- 115 Sinbaungwe
- 116 Taungdwingyi
- 117 Thayet
- 118 Tilin
- 119 Yenangaung
- 120 Yesagyo

Mandalay Division

- 121* Amarapura
- 122* Aungmyaythazan
- 123* Chanayethazan
- 124 Chanmyathazi
- 125 Kyaukpadaung
- 126 Kyaukse
- 127 Lewe
- 128* Madaya
- 129 Mahaaungmyay
- 130 Mahlaing
- 131 Meiktila
- 132 Mogoke
- 133 Myingyan
- 134 Myittha
- 135 Natogyi
- 136 Ngazun
- 137 Nyaung-U
- 138 Patheingyi
- 139* Pyawbwe
- 140 Pyigyitagon
- 141 Pyinmana
- 142 Pyinoolwin
- 143 Singu
- 144 Singaing
- 145 Tada-U
- 146 Tatkon
- 147 Taungtha
- 148 Thabeikkyin
- 149 Thazi
- 150 Wundwin
- 151 Yamethin

Mon State

- 152 Bilin
- 153 Chaungzon
- 154 Kyaikmaraw
- 155 Kyaikto
- 156 Mawlamyine
- 157 Mudon
- 158 Paung
- 159 Thanbyzayat
- 160 Thaton
- 161 Ye

Rakhine State

- 162 Ann
- 163 Buthidaung
- 164 Gwa
- 165 Kyaukpyu
- 166 Kyauktaw
- 167 Maungdaw
- 168 Minbya
- 169 Mrauk-U
- 170 Munaung
- 171 Myebon
- 172 Pauktaw
- 173 Ponnagyun
- 174 Ramree
- 175 Rathedaung
- 176 Sittwe
- 177 Thandwe
- 178 Toungup

Sagaing Division

- 179 Ayadaw
- 180 Banmauk
- 181 Budalin
- 182 Chaung-U
- 183 Hkamti
- 184 Homalin
- 185 Indaw
- 186 Kale
- 187 Kalewa
- 188 kanbalu
- 189 Kani
- 190 Katha
- 191 Kawlin
- 192 Khin-U
- 193 Kyunhla
- 194 Lahe
- 195 Lay Shi
- 196 Mawlaik
- 197 Mingin
- 198 Monywa
- 199 Myaung
- 200 Myinmu
- 201 Nanyun
- 202 Pale
- 203 Paungbyin
- 204 Pinlebu
- 205 Sagaing
- 206 Salingyi
- 207 Shwebo
- 208 Tabayin
- 209 Tamu
- 210 Taze
- 211 Tigyain
- 212 Wetlet
- 213 Wuntho
- 214 Ye-U
- 215 Yinmabin

Shan State (East)

- 216 Kengtung
- 217 Matman
- 218 Monghpyak
- 219 Monghsat
- 220 Mongkhet
- 221 Mongla
- 222 Mongping
- 223 Mongton
- 224 Mongyang
- 225 Mongyawng
- 226 Tachileik

Shan State (North)

- 227 Hopang
- 228 Hseni
- 229 Hsipaw
- 230 Konkyan
- 231 Kunlong
- 232 Kutkai
- 233 Kyuakme
- 234 Lashio
- 235 Laukkaing
- 236 Mabein
- 237 Manton
- 238 Mongmao
- 239 Mongmit
- 240 Mongyai
- 241 Muse
- 242 Namhsan
- 243 Namphan
- 244 Namtu
- 245 Nanhkan
- 246 Nawngkhio
- 247 Pangsang
- 248 Pangwaun
- 249 Tangyan

Shan State (South)

- 250 Hopong
- 251 Hsihseng
- 252 Kalaw
- 253 Kunhing
- 254 Kyethi
- 255 Laihka
- 256 Langkho
- 257 Lawksawk
- 258 Loilen
- 259 Mawkmai
- 260 Monghsu
- 261 Mongkaung
- 262 Mongnai
- 263 Mongpan
- 264 Nansang
- 265 Nyaungshwe
- 266 Pekon
- 267 Pindaya
- 268 Pinlaung
- 269 Taunggyi
- 270 Ywangan

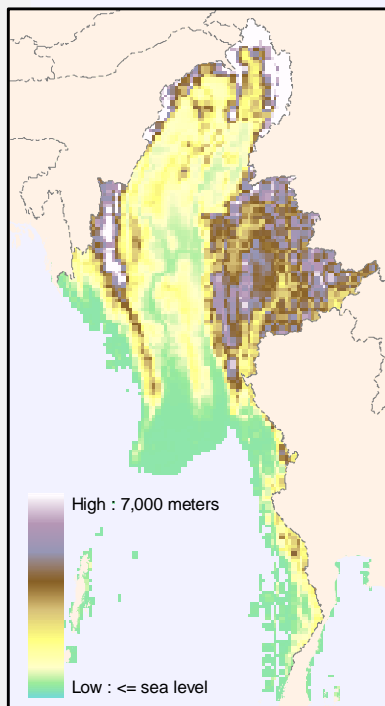
Tanintharyi Division

- 271 Bokpyin
- 272 Dawei
- 273 Kawthoung
- 274 Kyunsu
- 275 Launglon
- 276 Myeik
- 277 Palaw
- 278 Tanintharyi
- 279 Thayetchaung
- 280 Yebyu

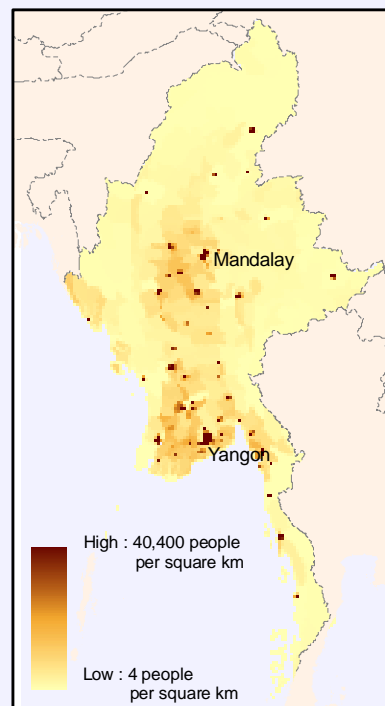
Yangon Division

- 281* Ahlone
- 282* Bahan
- 283* Botahtaung
- 284* Cocokyun
- 285* Dagon
- 286* Dagon Myothit(East)
- 287* Dagon Myothit(North)
- 288* Dagon Myothit(Seikkan)
- 289* Dagon Myothit(South)
- 290* Dala
- 291* Dawbon
- 292* Hlaing
- 293* Hlaingtharya
- 294 Hlegu
- 295 Hmawbi
- 296 Htantabin
- 297* Insein
- 298* Kamaryut
- 299 Kawhmu
- 300 Kayan
- 301 Kungyangon
- 302* Kyauktada
- 303 Kyauktan
- 304* Kyeemyindaing
- 305* Lanmadaw
- 306* Latha
- 307* Mayangone
- 308 Mingaladon
- 309* Mingalartaungnyunt
- 310* North Okkalapa
- 311* Pabedan
- 312* Pazundaung
- 313* Sanchaung
- 314* Seikgyikanaungto
- 315* Seikkan
- 316* Shwepyithar
- 317* South Okkalapa
- 318 Taikkyi
- 319* Tamwe
- 320* Thaketa
- 321 Thanlyin
- 322* Thingangkuun
- 323 Thongwa
- 324 Twantay
- 325* Yankin

Elevation meters from sea level



2000 Estimated Population Density people per square km



THAILAND

0 250 500 Kilometers

Disclaimer: The names shown and the boundaries used on this map do not imply official endorsement or acceptance by the IASC membership.

Source: Boundaries-Ministry of Health 2001, modified by UN RC's Office 2004; Place names-Ministry of Home Affairs (GAD) and Ministry of Agriculture & Irrigation (SLRD) translated by MIMU; Population-Govt of Myanmar, adjusted by FAO and CIESEN 2000; Elevation-SRTM 90 meter resolution from NASA/USGS.

Map Created by: Myanmar Information Management Unit
Creation Date: December 2007
Map ID: MIMU001

* Does not appear on the map at this scale

Myanmar Standardized Place Names and P-codes

In Myanmar there has long been confusion with multiple versions of transliterated place names in use by various agencies. The Myanmar Information Management Unit (MIMU) has taken on the task of overseeing a comprehensive translation of place names into a common system that is promoted by IASC members and other organizations. In addition to standard place names, standard place codes have also been developed.

The methodology applied for place name standardization was as follows:

The names and p-codes of States/Divisions, Districts and Townships were provided by the Ministry of Agriculture and Irrigation, Settlement and Land Records Department (SLRD).

In 2005 those names were presented to and agreed by UNCT and INGOs as the standard English translation for Myanmar.

The names for village tracts and villages were provided in Myanmar language by the Ministry of Home Affairs, General Administration Department (GAD). Names were translated/transliterated to English by a team supervised by the MIMU. The names were also cross-referenced with the SLRD names and the names in use by various UN Agencies and NGOs. Kachin, Chin and Shan names (i.e. non-Burmese names) were reviewed by local experts in the field. The final translation was completed in 2007.

What are P-codes?

P-code is an abbreviated term for 'Place Code'. P-codes are similar to postal codes and are part of a data management system that provides unique reference codes to thousands of locations in Myanmar. These codes provide a systematic means of linking and exchanging data and analyzing relationships between them. Any information that is linked to one location with a P-code can be linked and analyzed with any other.

In Myanmar, the p-code for rural places is structured as follows:

Code Structure	Example
3-letter ISO Prefix	MMR Myanmar
3-numerical code for States and Divisions	017 Ayeyarwady Division
3-numerical code for Townships	024 Bogale Township
3-numerical code for Village Tracts	001 Linn Taing Village Tract
3-numerical code for Villages	001 Auk Linn Taing Village

Therefore, the p-code for Auk Linn Taing village in Ayeyarwady Division is MMR017024001001.

State/Division & Township P-codes

Ayeyarwady Division (MMR017)

Map Index	Township	Pcode
1	Bogale	MMR017024
2	Danubyu	MMR017022
3	Dedaye	MMR017026
4	Einme	MMR017015
5	Hinthada	MMR017008
6	Ingapu	MMR017013
7	Kangyidaunt	MMR017002
8	Kyaiklat	MMR017025
9	Kyangin	MMR017012
10	Kyaunggon	MMR017007
11	Kyonpyaw	MMR017005
12	Labutta	MMR017016
13	Lemyethna	MMR017010
14	Maubin	MMR017019
15	Mawlamyinegyun	MMR017018
16	Myanaung	MMR017011
17	Myaungmya	MMR017014
18	Ngapudaw	MMR017004
19	Nyaungdon	MMR017021
20	Pantanaw	MMR017020
21	Pathein	MMR017001
22	Pyapon	MMR017023
23	Thabaung	MMR017003
24	Wakema	MMR017017
25	Yegyi	MMR017006
26	Zalun	MMR017009

Bago East Division (MMR007)

Map Index	Township	Pcode
27	Bago	MMR007001
28	Daik-U	MMR007007
29	Kawa	MMR007003
30	Kyaukkyi	MMR007011
31	Kyauktaga	MMR007006
32	Nyaunglebin	MMR007005
33	Oktwin	MMR007013
34	Phyu	MMR007012
35	Shwegyin	MMR007008
36	Tantabin	MMR007014
37	Taungoo	MMR007009
38	Thanatpin	MMR007002
39	Waw	MMR007004
40	Yedashe	MMR007010

Bago West Division (MMR008)

Map Index	Township	Pcode
41	Gyobingauk	MMR008014
42	Letpadan	MMR008008
43	Minhla	MMR008009
44	Monyo	MMR008013
45	Nattalin	MMR008012
46	Okpho	MMR008010
47	Padaung	MMR008003
48	Pauk Kaung	MMR008002
49	Paungde	MMR008004
50	Pyay	MMR008001
51	Shwedaung	MMR008006
52	Thayarwady	MMR008007
53	Thegon	MMR008005
54	Zigon	MMR008011

Chin State (MMR004)

Map Index	Township	Pcode
55	Falam	MMR004001
56	Hakha	MMR004002
57	Htantlang	MMR004003
58	Kanpetlet	MMR004008
59	Madupi	MMR004007
60	Mindat	MMR004006
61	Paletwa	MMR004009
62	Tiddim	MMR004004
63	Tonzang	MMR004005

Kachin State (MMR001)

Map Index	Township	Pcode
64	Bhamo	MMR001010
65	Chipwi	MMR001005
66	Hpakan	MMR001009
67	Injyangang	MMR001003
68	Kawnglanghpu	MMR001018
69	Machanbaw	MMR001016
70	Mansi	MMR001013
71	Mogaung	MMR001008
72	Mohnyin	MMR001007
73	Momauk	MMR001012
74	Myitkyina	MMR001001
75	Nogmung	MMR001017
76	Putao	MMR001014
77	Shwegu	MMR001011
78	Sumprabum	MMR001015
79	Tanai	MMR001004
80	Tsawlaw	MMR001006
81	Waingmaw	MMR001002

Kayah State (MMR002)

Map Index	Township	Pcode
82	Bawlakhe	MMR002005
83	Demoso	MMR002002
84	Hpasawng	MMR002006
85	Hpruso	MMR002003
86	Loikaw	MMR002001
87	Mese	MMR002007
88	Shadaw	MMR002004

Kayin State (MMR003)

Map Index	Township	Pcode
89	Hlaingbwe	MMR003002
90	Hpa-An	MMR003001
91	Hpapun	MMR003003
92	Kawkareik	MMR003006
93	Kyain Seikgyi	MMR003007
94	Myawaddy	MMR003005
95	Thandaung	MMR003004

Magway Division (MMR009)

Map Index	Township	Pcode
96	Aunglan	MMR009016
97	Chauk	MMR009003
98	Gangaw	MMR009023
99	Kamma	MMR009015
100	Magway	MMR009001
101	Minbu	MMR009007
102	Mindon	MMR009014
103	Minhla	MMR009013
104	Myaing	MMR009020
105	Myothit	MMR009005
106	Natmauk	MMR009006
107	Ngape	MMR009009
108	Pakokku	MMR009018
109	Pauk	MMR009021
110	Pwintbyu	MMR009008
111	Salin	MMR009017
112	Saw	MMR009025
113	Seikphyu	MMR009022
114	Sidoktaya	MMR009011
115	Sinbaungwe	MMR009017
116	Taungdingyi	MMR009004
117	Thayet	MMR009012
118	Tilin	MMR009024
119	Yenangyaung	MMR009002
120	Yesagyo	MMR009019

Mandalay Division (MMR010)

Map Index	Township	Pcode
121	Amarapura	MMR010006
122	Aungmyaythazan	MMR010001
123	Chanayethazan	MMR010002
124	Chanmyathazi	MMR010004
125	Kyaukpadaung	MMR010020
126	Kyaukse	MMR010013
127	Lewe	MMR010027
128	Madaya	MMR010009
129	Mahaaungmyay	MMR010003
130	Mahlaing	MMR010029
131	Meiktila	MMR010028
132	Mogoke	MMR010011
133	Myingyan	MMR010017
134	Myittha	MMR010015
135	Natogyi	MMR010019
136	Ngazun	MMR010021
137	Nyaung-U	MMR010022
138	Patheingyi	MMR010007
139	Pyawbwe	MMR010024
140	Pyigyitagon	MMR010005
141	Pyinmana	MMR010026
142	Pyinoolwin	MMR010008
143	Singu	MMR010010
144	Sintgaing	MMR010014
145	Tada-U	MMR010016
146	Tatkon	MMR010025
147	Taungtha	MMR010018
148	Thabeikkyin	MMR010012
149	Thazi	MMR010030
150	Wundwin	MMR010031
151	Yamethin	MMR010023

Mon State (MMR011)

Map Index	Township	Pcode
152	Bilin	MMR011010
153	Chauzong	MMR011003
154	Kyaikmaraw	MMR011002
155	Kyaikto	MMR011009
156	Mawlamyine	MMR011001
157	Mudon	MMR011005
158	Paung	MMR011008
159	Thanbyuzayat	MMR011004
160	Thaton	MMR011007
161	Ye	MMR011006

Rakhine State (MMR012)

Map Index	Township	Pcode
162	Ann	MMR012014
163	Buthidaung	MMR012010
164	Gwa	MMR012017
165	Kyaukpau	MMR012011
166	Kyauktaw	MMR012004
167	Maungdaw	MMR012009
168	Minbya	MMR012005
169	Mrauk-U	MMR012003
170	Munaung	MMR012012
171	Myebon	MMR012006
172	Pauktaw	MMR012007
173	Ponnagyun	MMR012002
174	Ramree	MMR012013
175	Rathedaung	MMR012008
176	Sittwe	MMR012001
177	Thandwe	MMR012015
178	Toungup	MMR012016

MIMU



Myanmar Information Management Unit

The Myanmar Information Management Unit (MIMU) is an Inter-Agency Standing Committee (IASC) common service providing information management services, including GIS mapping and analysis, to the humanitarian and development actors both inside and outside of Myanmar.



Why are P-codes useful?

P-codes resolve the basic issue of what we all call a place. If agencies develop individual systems for naming or coding places this makes data sharing extremely difficult and large amounts of potentially useful information may go unshared. Spatial data standards agreed by all agencies provide a single, unified system for referring to locations, allowing the free exchange of data between participating agencies.

Why should my agency use P-codes?

To promote cooperation and information sharing and gain full access to data collected by other agencies through assessments, evaluations, etc. This information can help you to plan your own programmes and avoid repeating surveys already done by others. Agencies using the P-codes for their own data management will be able to combine this information with datasets from other participating organisations.

P-codes also form the basis of spatial data standards required for full GIS capability, allowing data linked to towns, villages and administrative units to be mapped and geographically analysed. Data collected with Global Positioning System (GPS) equipment can also be used.

How can P-codes be used in my existing databases?

In most cases, adoption of P-codes requires only the addition of two extra columns to your existing databases and spreadsheets. Over time it is recommended that any other naming or coding systems be phased out and that all new data collection projects use the P-codes and Standardized Place Names. A full list of P-codes and place names is available in Excel or other formats from the Myanmar Information Management Unit. Technical assistance in incorporating the standards is also available upon request.

To report place name errors or omissions, please contact the Myanmar Information Management Unit (MIMU), Office of the UN Resident Co-ordinator, 6 Natmauk Road, Yangon, Myanmar, Phone: (951) 542 910-19.

Shan State (South) (MMR014)

Map Index	Township	Pcode
250	Hopong	MMR014003
251	Hsihseng	MMR014004
252	Kalaw	MMR014005
253	Kunhing	MMR014014
254	Kyethi	MMR014015
255	Laihka	MMR014012
256	Langkho	MMR014018
257	Lawksawk	MMR014008
258	Loilen	MMR014011
259	Mawkmai	MMR014020
260	Monghsu	MMR014017
261	Mongkaung	MMR014016
262	Mongnai	MMR014019
263	Mongpan	MMR014021
264	Nansang	MMR014013
265	Nyaungshwe	MMR014002
266	Pekon	MMR014010
267	Pindaya	MMR014006
268	Pinlaung	MMR014009
269	Taunggyi	MMR014001
270	Ywangan	MMR014007

Tanintharyi Division (MMR006)

Map Index	Township	Pcode
271	Bokpyin	MMR006010
272	Dawei	MMR006001
273	Kawthoung	MMR006009
274	Kyunsu	MMR006006
275	Launglon	MMR006002
276	Myeik	MMR006005
277	Palaw	MMR006007
278	Tanintharyi	MMR006008
279	Thayetchaung	MMR006003
280	Yebyu	MMR006004

Yangon Division (MMR013)

Map Index	Township	Pcode
281	Ahlong	MMR013037
282	Bahan	MMR013044
283	Botataung	MMR013017
284	Cocokyun	MMR013032
285	Dagon	MMR013043
286	Dagon Myothit(East)	MMR013020
287	Dagon Myothit(North)	MMR013019
288	Dagon Myothit(Seikkan)	MMR013021
289	Dagon Myothit(South)	MMR013018
290	Dala	MMR013030
291	Dawbon	MMR013014
292	Hlaing	MMR013040
293	Hlaingtharya	MMR013008
294	Hlegu	MMR013004
295	Hmawbi	MMR013003
296	Htantabin	MMR013006
297	Insein	MMR013001
298	Kamaryut	MMR013041
299	Kawhmu	MMR013028
300	Kayan	MMR013026
301	Kungyangon	MMR013029
302	Kyauktada	MMR013033
303	Kyauktan	MMR013024
304	Kyeemyindaing	MMR013038
305	Lanmadaw	MMR013035
306	Latha	MMR013036
307	Mayangone	MMR013042
308	Mingaladon	MMR013002
309	Mingalartaungnyunt	MMR013022
310	North Okkalapa	MMR013012
311	Pabedan	MMR013034
312	Pazundaung	MMR013016
313	Sanchaung	MMR013039
314	Seikgyikanaungto	MMR013031
315	Seikkan	MMR013045
316	Shwepyithar	MMR013007
317	South Okkalapa	MMR013011
318	Taikkyi	MMR013005
319	Tamwe	MMR013015
320	Thaketa	MMR013013
321	Thanlyin	MMR013023
322	Thingangkuun	MMR013009
323	Thongwa	MMR013025
324	Twantay	MMR013027
325	Yankin	MMR013010