

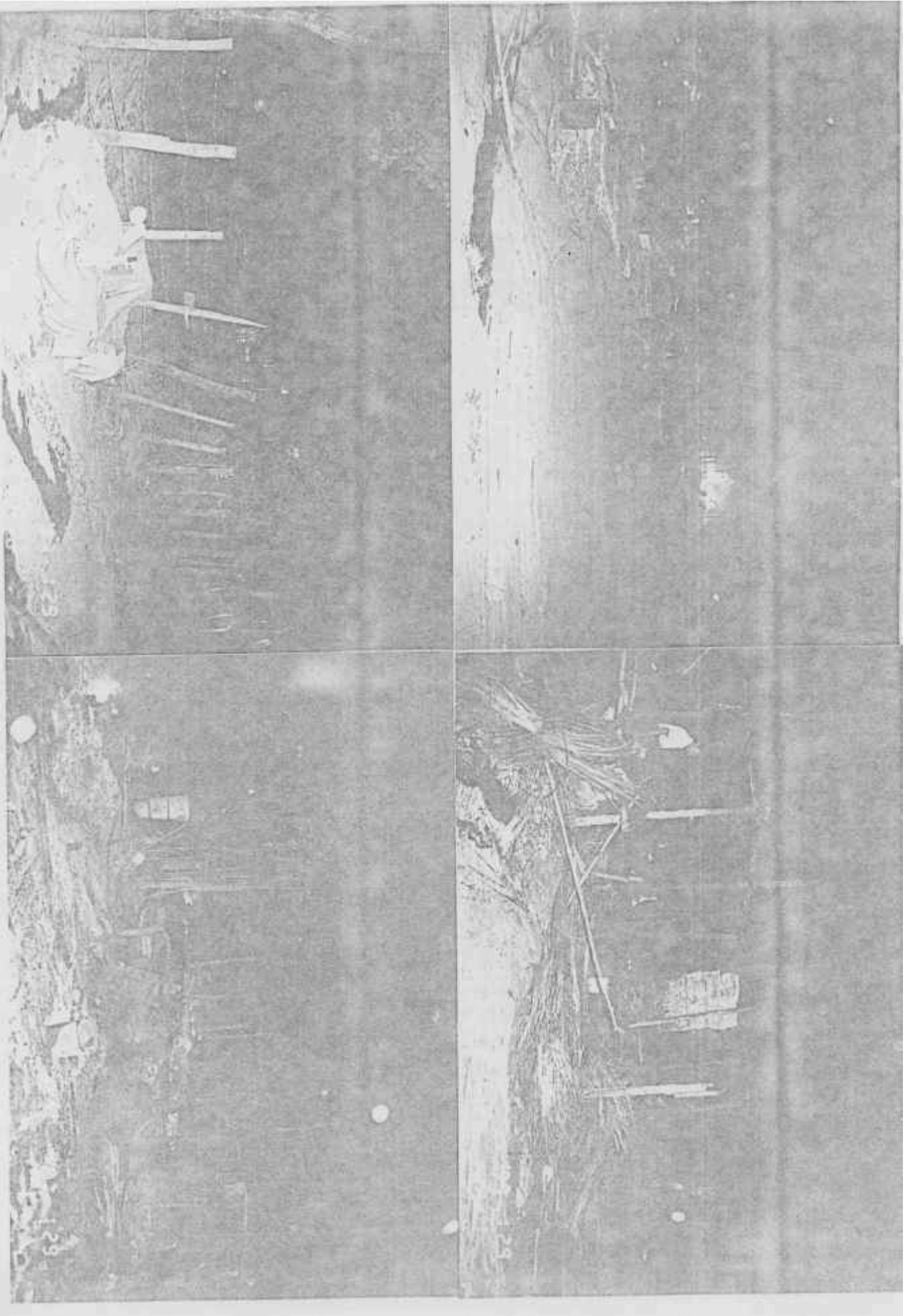


KAREN REFUGEE COMMITTEE

MONTHLY REPORT

JANUARY 1997

January 28th night Wang Ka Camp





KAREN REFUGEE COMMITTEE MONTHLY REPORT JANUARY 1997

Burmese intruders carried out its threat to attack the refugees camps *by* shelling Sho Klo Refugee Camp on January 4 and torching Wang Ka and Don Pa Kiang camps on the night of January 28, and Mae La camp on the morning of January 29.

The refugee elders had tried their best, by means of diplomacy, to dissuade the intruders from attacking but to no avail.

The refugees had had to make the most excruciating choice: " To go back to a land of wide-spread human rights abuse and severe repression or to stay on in a land of refuge but under a constant threat of violent attacks?"

The refugees whose camps came under attack lost most of what little they had. They have been subjected to moments of panic. More than 35,000 refugees are affected by the present crisis. However, they are not persuaded to return to their own land where there is no respect for human rights and human dignity.

' Staring at what was once her 'home' and carrying all that is left, this lady, like most other, faces a bleak future."



For I was hungry and you fed me; I was thirsty and you gave me water; I was a stranger and you invited me into your homes; naked and you clothed me; sick and in prison, and you invited me. Matthew 25: 35-36



Don Pakiang camp Jan, '97

NUMBER OF PEOPLE IN THE CAMPS.

CAMP	No. of families	Over 12 YRS		5- 12 YRS		Under 5 YRS		Total	
		M	F	M	F	M	F		
MAE	Wang Kha (Huay Ka Lok)	1240	1919	2331	676	647	632	626	6831
SOT	Don Pa Kiang	709;	7278	1132	347	342	348	316	3763
AREA	Mae La	3911	8997	7896	2914	2618	1300	1320	25045
	Sho Klo (Mae Song)	1124	1763	2125	1155	1539	361	358	7301
	Maw Ker	1386	2931	2551	645	613	818	812	8370
	Total	8370	16888	16035	5737	5759	3459	3432	51310
N	Mae Ra Ma Luang	781	1532	1397	593	463	332	298	4615
O	Khun Mae Kong Kha	487	800	892	367	376	244	273	2952
R	Sa La	294	653	538!	197	160	102	118	1768
T	Mae Sa Kup	318	621	603:	241	214	85	128	1892
H	Khlo Pa	241	501	456	182	167	118	117	1541
	U Da Hta	267	585	493:	189	195	130	134	1726
	Mae Ye Hta	276	597	491:	237	193	83	65	1666
	Total	2664	5289	4870	2006	1768	1094	1133	16160
	Ta Per Poo	433	929	630	259	233	133!	137	2321
S	No Pa Don (Nong Luang)	161	306	239	121	113	61	76	916
	Noh Pa Htaw Wall	378	766	653	174	210	180	179	2162
O	Mae Ta Raw Khee	196	449	446	185	164	70	50	1364
U	Le Po Hta	154	353	32	255	213	54	61	1259
T	Ta La Ku	49	82	86	31	37	13	20	269
H	Htee Hta Baw	399	669	685	258	241	207	233	2293
	T' Kwee Klaw	183	300	324	158	158	124	113	1177
	Total	1953	3854	3386	1441	1369	842	869	11761
	Grand Total	12987	26031	24291	9184	8896	5395	5434	79231

RICE AND OTHER ITEMS RECEIVED FOR THE MONTH

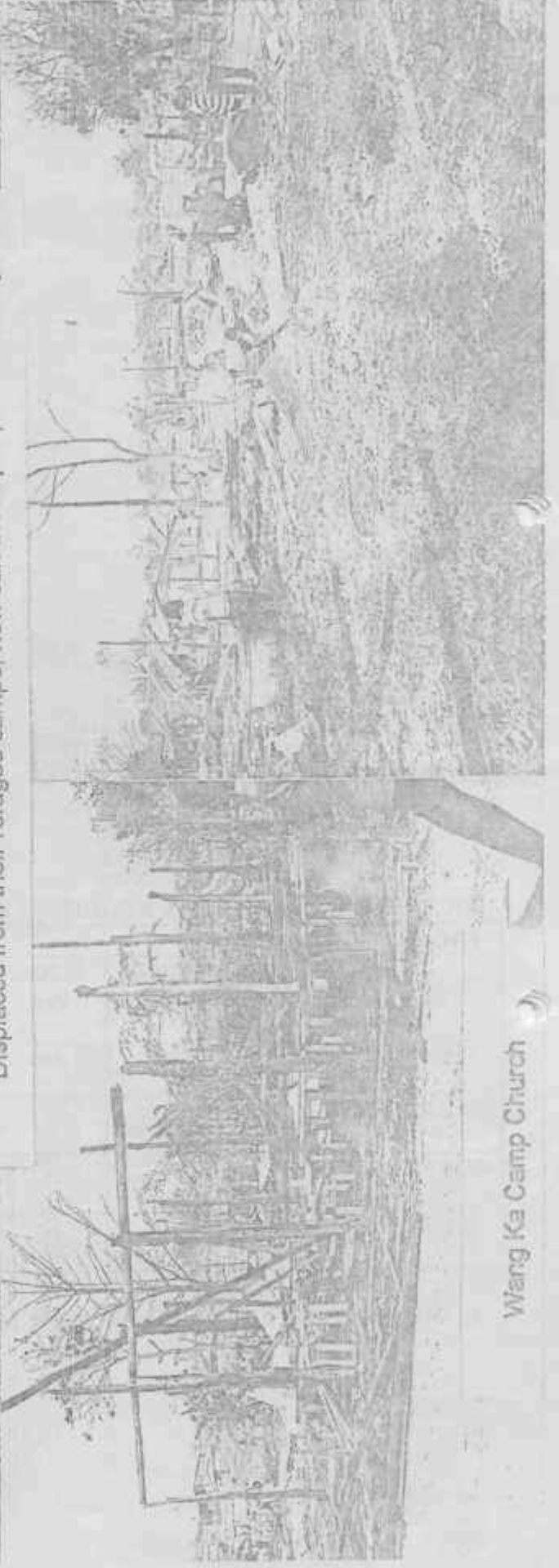
FROM	ITEMS							
	Rice sacks	Salt	F.Paste tins.	M.Nets Pes.	Warm Clothing Bale	Pressed Sawdust bundle	Cooking Pot 6/set	Blanket 40/ box
B.B.C	7,888	17,100	3281	400	13	A/ 12,150		14
B.B.C	1,337	3,100	540	-	-	B/ 2,300		-
COERR	350	-	-	-	-	-		-
I.C.S	-	-	-	-	-	-	59	-

A 3 Bundles/Famly. B 2 bundles/Family -> Mae La + Sho Klo only.

Wangka camp Jan. 29, '97



* Displaced from their refugee camps, how can these people find safety?*



Wang ka Camp Church

DISTRIBUTION OF RICE AND OTHER ITEMS RECEIVED

CAMP	RICE	SALT	F. Paste	M.nets pcs	Warm clothing bale	Cooking pot	Blanket boxes
Wang Kha	1070	2500	425	100	2	-	3
Don Pa Kiang	600	1500	241	200	11	59	8
Mae La	4078	8050	1618	-	-	-	-
Sho Klo	1181	2250	470	-	-	-	-
Maw Ker	1309	2800	529	50	-	-	3
Ta Per Poo	362	900	150	-	-	-	-
No Pa Doh	135	300	55	-	-	-	-
Noh Pa Htaw Wah	340	800	135	-	-	-	-
Mae Ta Raw Khee	500	1100	200	-	-	-	-
Total	9575	20200	3821	400	13	59	14

We thank the Thai authorities concerned and the people of the Kingdom of Thailand for their kindness in granting refuge to the Karen refugees and for the permissions granted to humanitarian agencies to provide the refugees with the most basic needs. We also thank the individuals and agencies for doing what they can through the years to help.

The situation worsens and the Karen refugee population increases remarkably again. It is difficult to apprehend what the future holds for these people and for the multitude of other displaced people scattered everywhere in the countryside and along the border. Your continued help and support is earnestly required.

May God bless all of you.

I beg to remain.

Yours faithfully,



Robert Htwe
Chairman
Karen Refugee Committee.

Don Pakiang camp Jan, 29, '97



This reflects the ever dangerous, difficult situations Karen civilians face on the side of the border